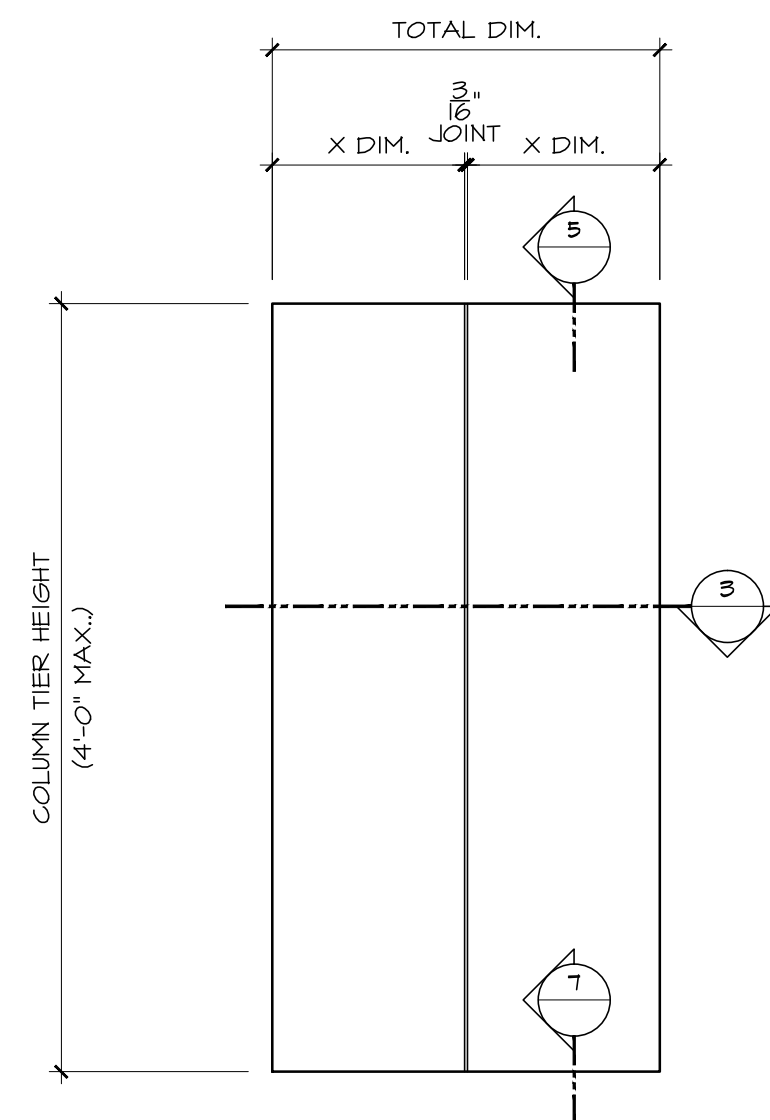
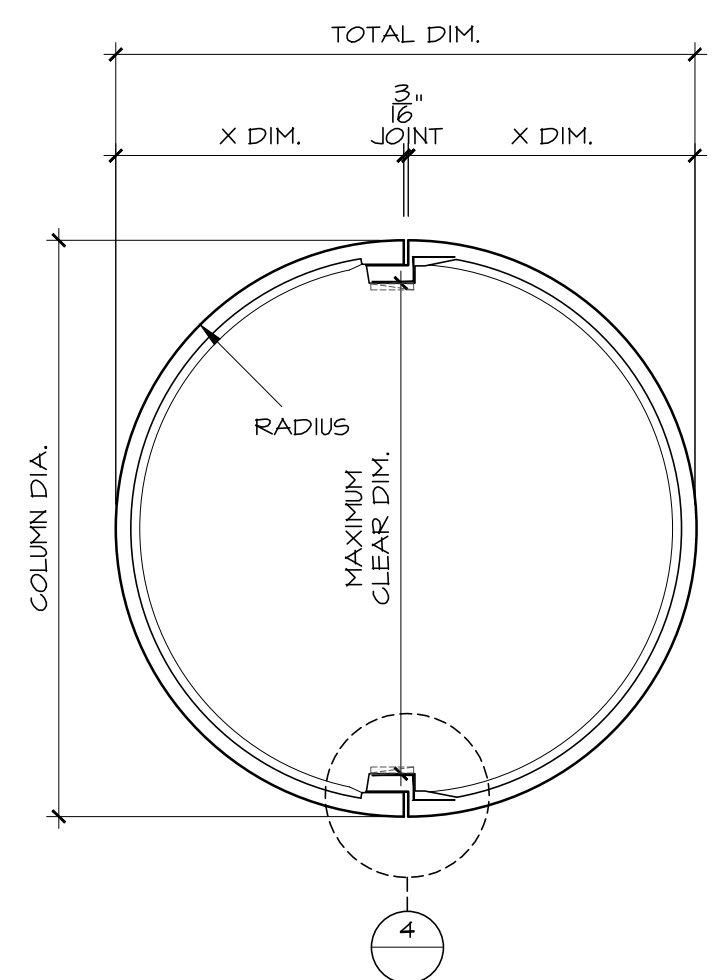


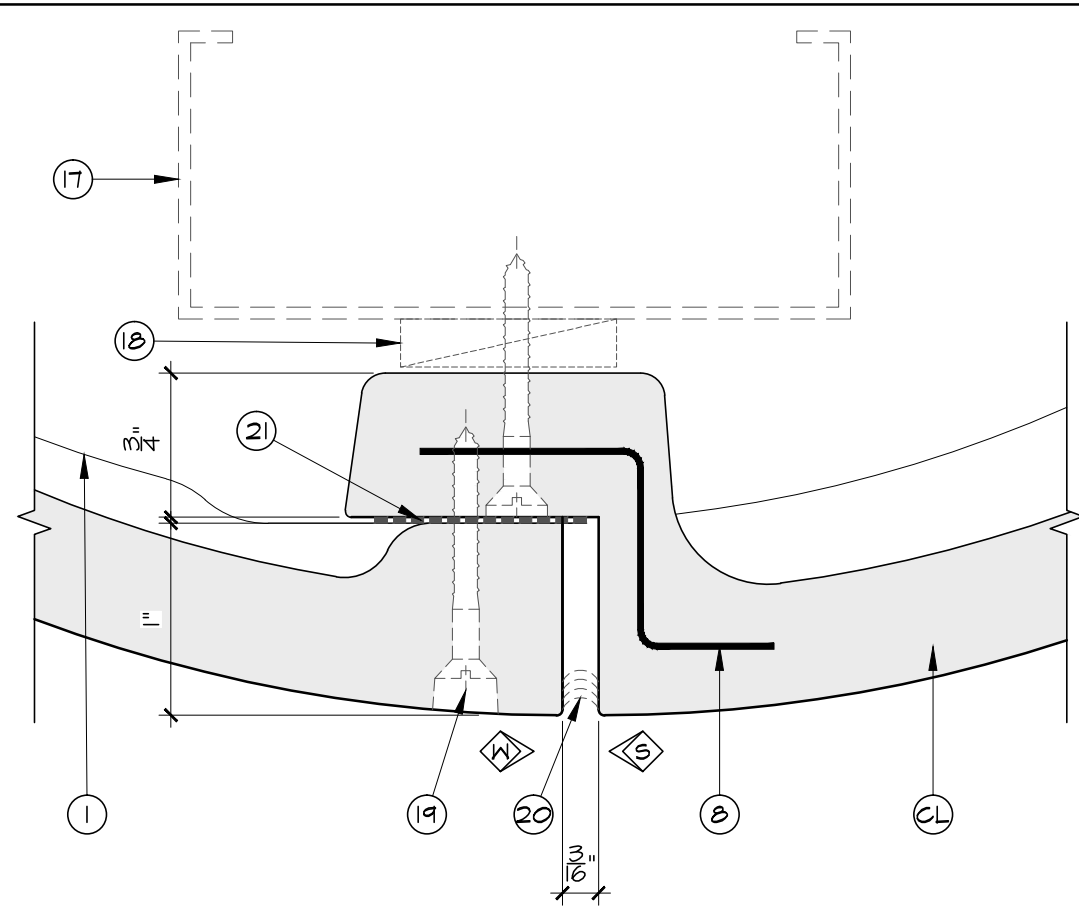
1 COLUMN ELEVATION  
SCALE: 1"=1'-0"  
REF:



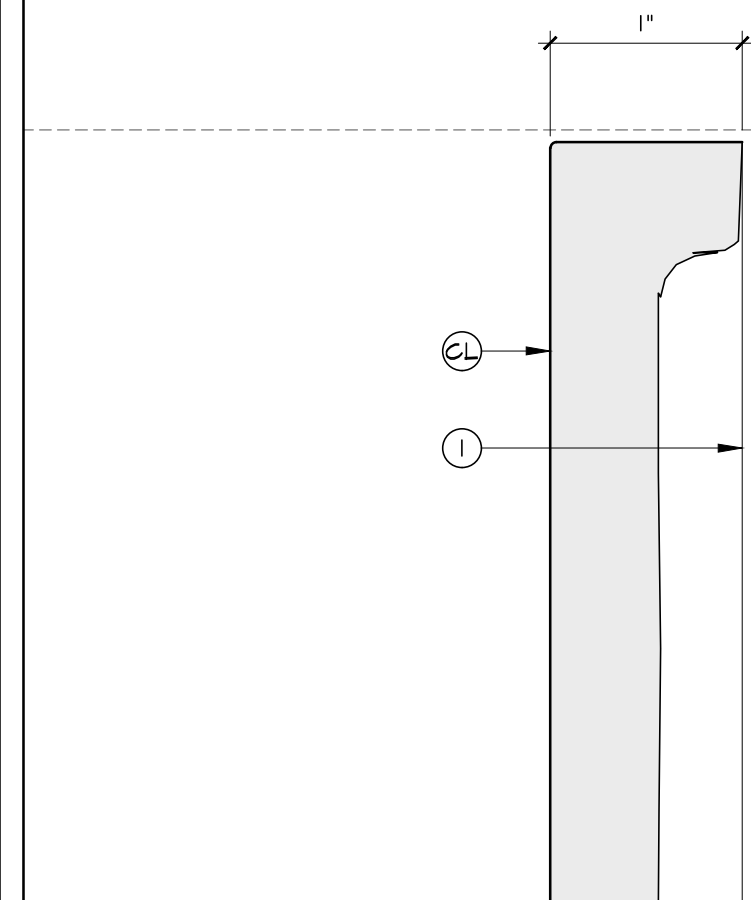
2 COLUMN ELEVATION  
SCALE: 1"=1'-0"  
REF:



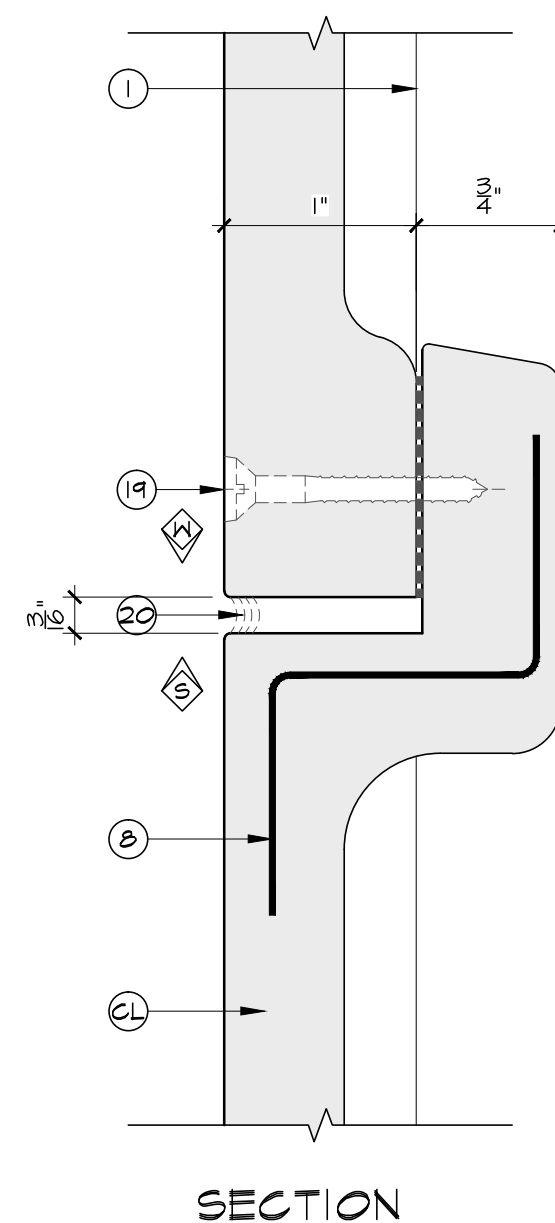
3 COLUMN PLAN SECTION  
SCALE: 1 1/2"=1'-0"  
REF:



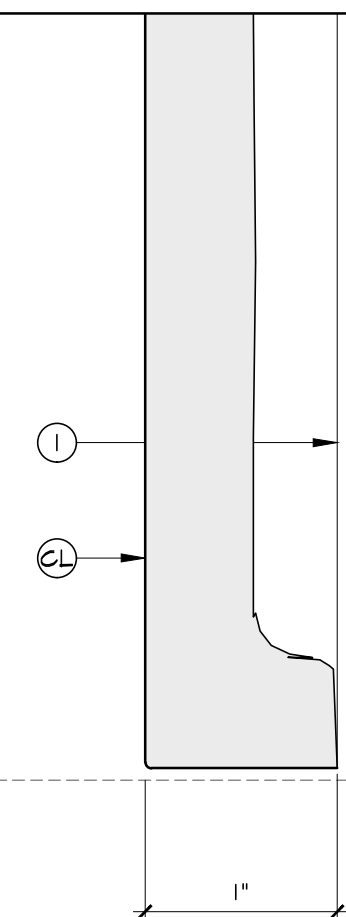
4 OVERLAP JOINT DETAIL  
SCALE: FULL  
REF:



5 DETAIL AT COLUMN TOP  
SCALE: FULL  
REF:



6 HORIZONTAL STACK JOINT  
SCALE: FULL  
REF:



7 DETAIL AT COLUMN BOTTOM  
SCALE: FULL  
REF:

STANDARD LEGEND

- G.F.R.C.-L (CL)
- CL G.F.R.C.-L [INTEGRAL COLOUR CEMENT WITH SANDBLASTED TEXTURE]
  - 1 FLANGES
  - 2 N/A
  - 3 JOINT [V]
  - 4
  - 5 JOINT
  - 6 N/A
  - 7 N/A
  - 8 STEEL "L" OR "Z" [NOT CONT.'S]
  - 9 BUILT-IN "U" REINF. [CONT.'S]
  - 10 BUILT-IN ROD REINF.
  - 11 BUILT-IN LOOP [HANGER]
  - 12 BUILT-IN PLASTIC GUSSET
  - 13 BEVEL EDGES / CORNERS
  - 14 FALSE JOINT
  - 15 GROUT [PATCHING KIT]
  - CEMENT FLANGES
  - STEEL FLANGES
- BY OTHERS
- 16 EXT. BOARD OR PLYWD. BACKING
  - 17 FRAMING, BLOCKING, ETC.
  - 18 SHIMS
  - 19 STAINLESS STEEL SCREWS [FILLED AS REQ'D]
  - 20 CAULKED JOINT
  - 21 ADHESIVE
  - 22
  - 23
  - 24

MISCELLANEOUS CERTIFICATION

- XX NUMBER DENOTES RECOMMENDED INSTALLATION SEQUENCE
- FORMGLAS IS REGISTERED AS AN ISO 9001-2000 COMPANY
- \* ASTERISK DENOTES SITE CUT PART
- ALL BUILT-IN STEEL IS GALVANIZED

G.F.R.C.-L (CL) NOTES

1. INSTALLATION
- FASTENING, SUSPENSION AND BRACING METHODS INDICATED ARE TO BE CONSIDERED A GUIDE ONLY. THE INSTALLATION CONTRACTOR SHALL ABIDE BY LOCAL CODES, VERIFY JOB CONDITIONS AND ADJUST INSTALLATION PROCEDURES ACCORDINGLY.
  - SOME SITE CUTTING AND/OR GRINDING OF PARTS MAY BE REQUIRED.
  - AVOID FACE FASTENING WHERE POSSIBLE
  - GROUT FILLED SCREWHOLES WILL BE VISIBLE
  - USE SPEC. ADHESIVE WHENEVER POSSIBLE
2. COUNTERSUNK SCREWHOLES
- USE G.F.R.C.-L (CL) MATCHING GROUT SPARINGLY. SMEARING THE GROUT ONTO THE G.F.R.C.-L (CL) SURFACE BEYOND WILL SPOIL THE APPEARANCE.
  - ALWAYS USE STAINLESS STEEL SCREWS WHEN FASTENING.
3. JOINTS
- NEVER TRY TO MAKE JOINTS DISAPPEAR
  - ALL JOINTS SHOULD BE MIN. 3/16" (4 mm) WIDE AND CAULKED.
4. COLOUR
- COLOUR SHADING VARIATIONS WILL OCCUR BETWEEN PARTS. DO NOT TRY TO MATCH SHADINGS IN SPECIFIC AREAS. MIX VARYING PARTS AT RANDOM.
5. TEXTURE
- STANDARD G.F.R.C.-L (CL) TEXTURE IS FACTORY SANDBLASTED.
6. DRAFT ANGLES AND RADI
- DRAFT ANGLES ARE REQUIRED FOR MOLD RELEASE. UNLESS SPECIFICALLY NOTED, REVEALS, SETBACKS OR RETURNS WILL BE DRAFTED BETWEEN 5° AND 10°. ALL CORNERS WILL HAVE A SLIGHT RADIUS UNLESS SPECIFICALLY NOTED.
7. TOLERANCES
- |                                |                 |
|--------------------------------|-----------------|
| SHELL THICKNESS                | ± 1/8" (3MM)    |
| DIMENSIONAL LENGTH OR WIDTH    | ± 1/16" (4.8MM) |
| WARPAGE /BOWING OUT OF PLANE   | 1/8" (0.104/CM) |
| FIELD SHIMMING MAY BE REQUIRED |                 |
8. ITEMS EXCLUDED
- UNLESS SPECIFICALLY NOTED, HARDWARE, CLIPS, FASTENERS, ADHESIVE, CAULKING, etc. ARE TO BE SUPPLIED BY OTHERS.
9. SEE FORMGLAS SPECIFICATIONS
- FOR ADDITIONAL INFORMATION
10. MOLDS
- ALL "CUSTOM MOLDS" WILL BE DESTROYED ONE MONTH AFTER DELIVERY OF MATERIALS. CONTRACTOR/ OWNER MAY NEGOTIATE TO RETAIN MOLDS.
11. NOTE
- DRAWING APPROVAL CONSTITUTES APPROVAL OF ALL CONTENT. STANDARD LEGEND, GENERAL NOTES, COLORS/FINISHES/TEXTURE AND DIMENSIONS. FORMGLAS PRODUCTS LTD. WILL PROCEED WITH MANUFACTURING UPON RECEIPT OF WRITTEN APPROVAL OF SHOP DRAWINGS AND CUSTOM COLOUR/TEXTURE SAMPLES.

GFR-C-L COLOUR SELECTION: TO BE VERIFIED

ISSUED FOR APPROVAL

REVISIONS DATE

**Formglas**  
Products Ltd.  
2 CHAMPAGNE DRIVE, TORONTO, ONT. M3J-2C5 CANADA  
TEL: (416) 635-8030 FAX: (416) 635-6588  
338 FOURTEEN ST, SUITE 150 AMBRIDGE, PA 15003 USA  
TEL: (724) 266-1220 FAX: (724) 266-7174  
AVE. RUBILNA 88, PARQUE INDUSTRIAL PALAÇO, MEXICALI, B.C.  
TEL: (686) 582-7609 FAX: (686) 582-7615  
E-MAIL: ENG@FORMGLAS.COM

GFR-C-L COLUMN ELEVATIONS/PLAN/DETAILS

DATE: SCALE: AS SHOWN  
DRAWN: CHECKED:  
DRWG: